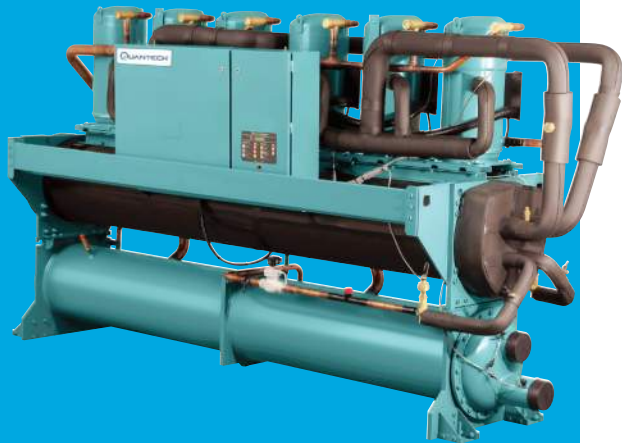


QWC3

50-200 Tons
Water-Cooled Scroll Chillers



The QWC3 water-cooled chiller has a superior efficiency to the industry average, providing capacity to meet the cooling requirement for a wide range of facilities and to handle various operating conditions with the latest scroll compressor technology and heat-exchanger innovation.

Chiller Features:

- Produces chilled water from 59°F down to 15°F (15°C to -9°C) and utilizes condenser water from 64°F to 125°F (18°C to 52°C).
- Large operating envelope suitable for comfort cooling, process cooling, low-temperature brine cooling, non reversing heat pump, and changeover thermal storage.

Refrigerant: HFC-410A

Additional Features Available with Made-to-Order:

For greater flexibility, QWC3 chillers can be equipped with these optional accessories:

- Electrical Options: Non-fused disconnect switch, circuit breakers, reduced MCA.
- Control options: BAS/EMS interface, non-reversible heat pump.
- Sound Reduction: Compressor acoustic blankets.
- Liquid-Flow Detection: Flow switch or differential pressure switch.
- Vibration Isolators: Neoprene pads, spring isolators, or seismic isolators.

Designed for Quiet Operation:

Quiet scroll compressors and piping specifically designed to reduce vibration. Optional acoustic blankets are available to further dampen sound down to 68 dBA.

Smaller Foot Print and Installation Time:

QWC3 compact design delivers up to 4.6 TR/square foot to fit through a standard single door with no disassembly required. Easy Installation with a single-point electrical power connection and Victaulic water connections. Every unit is pressure and run tested at the factory to reduce the risk of problems at startup.



NY Office: P: 516-568-6500 • F: 516-256-3299
Equipment Sales: 516-256-7646
Engineering Department:
P: 516-256-7666 • F: 516-568-6586
E: engineering@adehvac.com
NJ Office: P: 732-553-0038 • F: 732-553-1075

QWC3

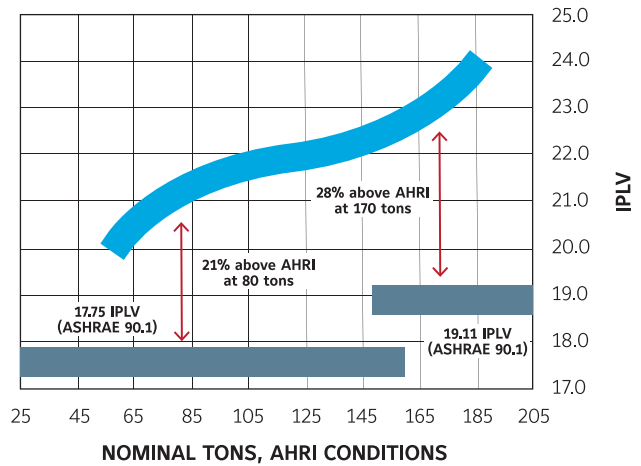
50-200 Tons
Water-Cooled Scroll Chillers



QWC3 CHILLER AVERAGE IPLV

Energy-efficient at both Full Load and Part Load:

QWC3 chillers provide a full-load efficiency up to 17.0 EER. Combining multiple scroll compressors with the intelligence to optimally load each compressor for part-load efficiencies that exceed industry averages, up to 24.5 IPLV.



QUANTECH™ WATER-COOLED CHILLERS

PRODUCT	MODEL	TONS	EFFICIENCY MODEL	ENERGY EFFICIENCY RATIO	IPLV
QWC3	QWC3050TSE	51.76	STANDARD	16.1	20.1
QWC3	QWC3060THE	63.34	HIGH	16.5	20.2
QWC3	QWC3060TSE	60.11	STANDARD	15.7	19.9
QWC3	QWC3070THE	73.24	HIGH	16.3	20.7
QWC3	QWC3070TSE	68.05	STANDARD	15.2	20.2
QWC3	QWC3080THE	82.66	HIGH	16.8	23.1
QWC3	QWC3080TSE	76.85	STANDARD	15.8	22.5
QWC3	QWC3090THE	92.77	HIGH	16.9	23.1
QWC3	QWC3090TSE	86.17	STANDARD	16.2	22.6
QWC3	QWC3095THE	95.97	HIGH	16.7	20.5
QWC3	QWC3100TSE	93.15	STANDARD	16.2	23.0
QWC3	QWC3115THE	117.6	HIGH	16.7	22.8
QWC3	QWC3115TSE	110.9	STANDARD	15.6	21.9
QWC3	QWC3130THE	129	HIGH	16.6	23.0
QWC3	QWC3130TSE	127.9	STANDARD	16.0	21.9
QWC3	QWC3150THE	149.1	HIGH	16.6	22.4
QWC3	QWC3150TSE	144.5	STANDARD	16.1	21.9
QWC3	QWC3170TSE	167.3	STANDARD	17.1	25.4
QWC3	QWC3200TSE	199.1	STANDARD	16.8	24.8

Cooling Capacity at AHRI standard conditions, evaporator entering/leaving temperature 54°F/44°F, condenser entering/leaving temperature 85°F/95°F.



Contact your local Quantech™ manufacturer representative or visit quantech-hvac.com



Smart Equipment™ is a trademark of Johnson Controls, Inc. in the United States and other countries. It is a part of the Johnson Controls product portfolio.

