



# thermoscreens®

## About Us



For over 60 years Thermoscreens have been dedicated to the design and manufacture of high quality air curtains. We have built an enviable reputation for providing high quality, reliable solutions for commercial, retail and industrial applications. Our comprehensive range of air curtains offers the highest levels of climate separation and comfort with the aim of minimising energy loss and increasing energy efficiency.

As an industry innovator, Thermoscreens is actively responding to environmental issues. All products are designed with energy efficiency in mind in the selection of materials used in manufacture and the need to reduce energy consumption. CO<sup>2</sup> emissions are being addressed through new innovations and revolutionary technologies, such as heat pump air curtains and control solutions.

Understanding its responsibility towards sustainability, Thermoscreens adheres strictly to the Environmental Management System BS EN ISO14001:2004.

Thermoscreens continue to manufacture all products in the UK and now export to over 50 countries world-wide. Whether you need an air curtain for a small kiosk or a large industrial application you can be sure that Thermoscreens will have a cost effective high quality solution to meet your need.

Underpinning everything we do is Thermoscreens' commitment to produce quality, reliability, performance and delivery - evidenced by accreditation to the Quality Management Systems BS EN ISO9001:2008.

## Why fit an air curtain?

### ■ **Comfort:**

Air curtains help promote the perfect environment whether warm, cool or ambient.

### ■ **Open Door Policy:**

Air curtains promote open door trading in retail outlets and provides uninterrupted access for passing trade.

### ■ **Energy Saving:**

Air curtains over open doors promote significant energy savings.

### ■ **Protection:**

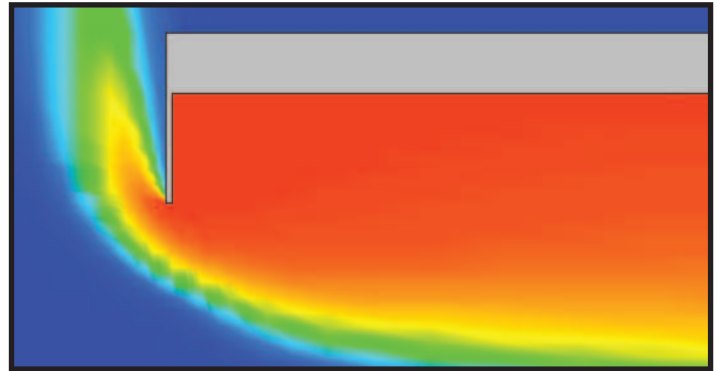
Air curtains help to ensure a clean and healthy environment.

### ■ **Health and Safety:**

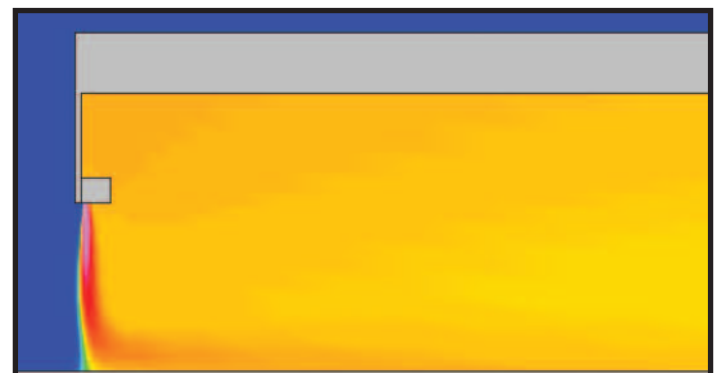
In refrigeration applications, Thermoscreens cold store air curtains can significantly reduce the ingress of warm air when doors are required to be left open for access helping to retain the refrigerated air inside.

### ■ **Ease of Installation:**

Air curtains are not only easy to install but also easy to maintain throughout their serviceable life. A simple and cost effective solution for a comfortable environment.



With an open door, typically warm air escapes and cold air enters.



With an air curtain, warm air is retained and cold air entering is heated.

## Why fit an air curtain?

To ensure maximum **effectiveness** and **comfort**, it is important to choose the correct air curtain. An air curtain with too little velocity will not be able to stop cold draughts from entering the building whilst an air curtain that is too powerful which has been installed at the incorrect door height could be noisy and uncomfortable.

To **select the appropriate air curtain** the following factors should be taken into account:

- **Type of building and the interior design of the premises**

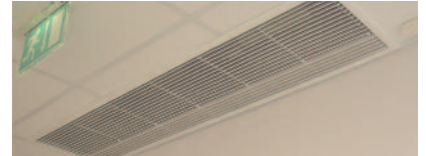
- **Type of air curtain required**

- Surface mounted or recessed
- Electrical, Water or Ambient

Surface Mounted

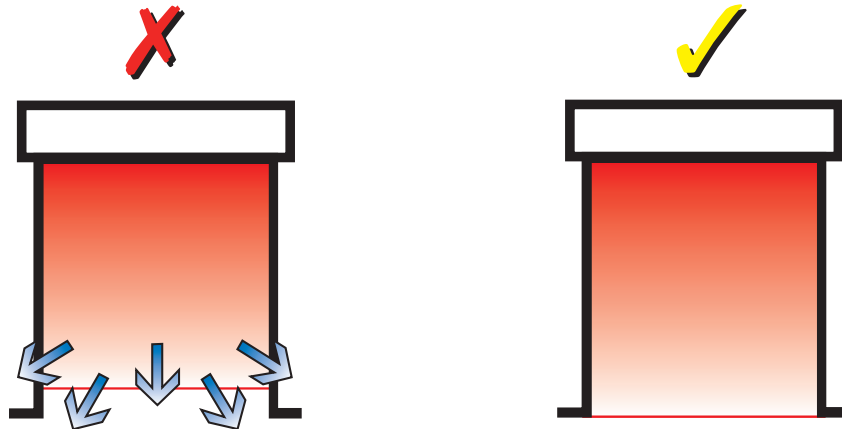


Recessed

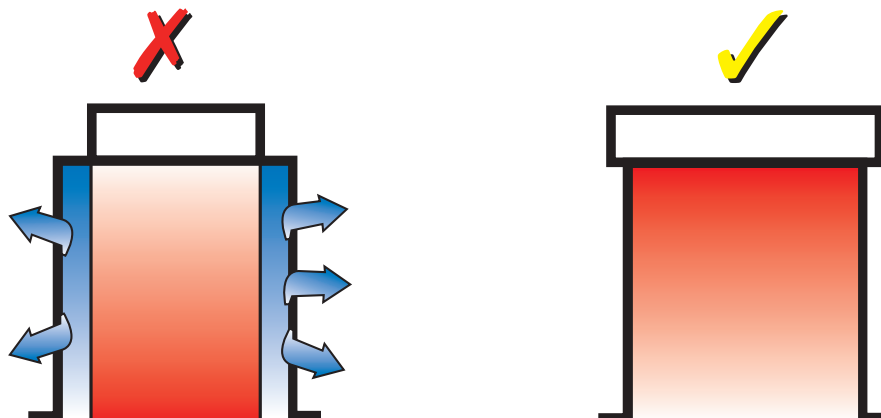


- **Voltage and power supply**

- **Installation height** - If an air curtain is to operate to maximum effectiveness, it is essential that the air curtain has sufficient air velocity to discharge over the whole height and width of the doorway.



- **The width of the door** - The air curtain should be wider than the width of the door opening. Overlapping the full opening, the air curtain controls the ingress of air and other pollutants maintaining a comfortable environment.



- Characteristics of the door (i.e. door way locations).
- Ensure the units are positioned as close to the door opening as possible and that there are no obstructions between the air curtain jet of air and the opening of the door.
- Characteristics of the building (i.e. door way locations, through draughts).

# Air velocity

Maximum Mounting Height (metres)

6m

5m

4m

3m

2m

1m

0m

